

ARMOR-ROCK™ Flooring

A 'Proven' Overlay for Dairy Floors

ONLY FROM
VANBERG
SPECIALIZED COATINGS

PARLOR FLOORS



Before

After

PROTECT NEW



Before

After

RESTORE OLD

TANK & CHEMICAL ROOM FLOORS



Before

After



Before

After

OFFICES, BREEZEWAYS & HALLWAYS TOO!

ARMOR-ROCK™ is a Non-Slip, Seamless & Sanitary Surface

- IDEAL FOR CATTLE TRAFFIC - NO NEED FOR MATS!
- STANDS UP TO HARSH DAIRY CHEMICALS
- EASY TO KEEP CLEAN
- FORMS PERMANENT BOND

ARMOR-ROCK™ Surface Options

PARLOR FLOORS

ES NATURAL



Standard non-slip coarse blend

G-DIAMOND



Extra coarse blend with exceptional wearing properties

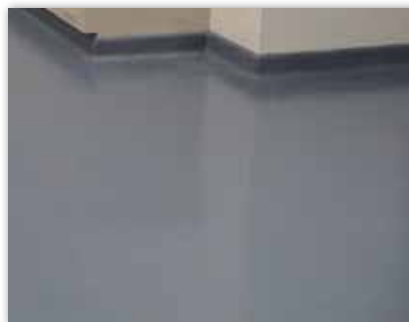
TANK, CHEMICAL, OFFICE & OTHER PEOPLE TRAFFIC FLOORS

VSC MEDIUM



VSC MEDIUM is our most popular aggregate blend. It is used with the Natural ARMORCOAT (Clear) EPOXY or *WITH MANY COLOR OPTIONS!*

COLOR-STONE



VSC COLOR-STONE blends offer a wide variety of tweed blends for attractive and tough wearing overlays. Available in MEDIUM or COARSE.

PROCESS

STEP 1

- Level eroded zones using **CON-KORITE™** or other **VSC EPOXY MORTARS**
- Prepare substrate mechanically or chemically using **VSC CONCRETE CLEAN & ETCH**



Level Eroded Zones with **CON-KORITE™ MORTAR**



Mechanical Prep



VSC CONCRETE CLEAN & ETCH Prep

STEP 2

- Combine **ADMIX** with 1.5 gal unit of selected **ARMORCOAT EPOXY**



ARMOR-ROCK Batch



Combine



Mix

STEP 3

- Using either a notched trowel, notched squeegee or gauge rake, spread slurry over the surface



Trowel

Coverage:
1/8" covers 42 sq.ft./batch



Squeegee

3/16" covers 28 sq.ft./batch



Gauge Rake

1/4" covers 21 sq.ft./batch

STEP 4

- Roll to level with looped cover
- Broadcast selected aggregate to rejection (no shiny spots) - maintaining a wet edge



Roll



Broadcast



Wet Edge

STEP 5

- Remove excess aggregate and mix and apply **ARMORCOAT Top Coat** (if used) with squeegee and roller



Mix Epoxy



Squeegee



Roll

Typical Top Coat Coverage: 100 (coarse surfaces) to 140 (less coarse surfaces) sq. ft. per gallon.

MATERIALS for ARMOR-ROCK THX™ System

1. BASE MIX

A. Epoxy Options to Fit Virtually Any Dairy Application

ARMOR-COAT 1300 (sets in 6 to 8 hrs)	1.5 gal, 3 gal & 15 gal	Clear and Medium Gray
ARMORCOAT FAST (sets in 4 to 5 hrs)	1.5 gal, 3 gal & 15 gal	Clear and Medium Gray
ARMORCOAT X'TRA FAST (sets in 1 to 2 hrs)	1.5 gal & 3 gal	Clear Only - Base mix only
ARMORCOAT CR (sets in 6 to 8 hrs)	5 gal*	Clear only
<i>Extra High Chemical Resistance (*consists of (2) 2.5 gal batches)</i>		

VSC COLOR PACKS can be added to CLEAR ARMORCOAT at the rate of 1 bag per 3 gallon unit. Many colors are available.

B. ADMIX - 25 lb. bag (combine one 25 lb. bag with one 1.5 gal unit of ARMORCOAT EPOXY and 42 lbs with one 2.5 gal unit of ARMORCOAT CR)

2. SURFACE BROADCAST

A. Aggregate Broadcast options - Use 25 lbs per (1.5 gal proxy + 25 lbs. ADMIX) batch

ES NATURAL 50 lb. bag

G-DIAMOND 35 lb. bag

VSC MEDIUM 50 lb. bag

COLORSTONE™ MEDIUM 50 lb. bag

COLORSTONE™ COARSE 50 lb. bag

SUPPLIES

CONCRETE CLEAN & ETCH

Item#	Description
VP-151-1	1 gal (4/CS)
VP-151-5	5 gal



Portable Pail Mixer

Item#	Description
TSKM5825	Unit with prop for Epoxy mortars
TSKR	Standard Prop Replacement
TSKM1	CON-KORITE™ paddle



9" Roller Frame

Item#	Description
TSF0010-9	9-inch HD frame



SOLVENT 101 for Clean Up

Item#	Description
VP-101-1	1 gal Solvent 101 (4/CS)
VP-101-5	5 gal



Notched Squeegee

Item#	Description
TS1418-SE	1/8" or 1/4" Notch
TSF0008	5' Tapered Pole



9" Covers

Item#	Description
TSR204-9	Coatings Cover 1/2" Nap
TSR233-9	Looped Cover for ARMOR-ROCK Base Mix



4" Prop Mixer to Mix Epoxy Resins

Item#	Description
TS46565	4-inch prop mixer



Notched Trowel

Item#	Description
TS110-33	11" x 4 1/2" x 1/8" or 1/4" Notch



3' Pole Set

Item#	Description
TSR0007-3	3-Piece Pole Set



For Project Planning Assistance, Application Guidelines and Tech Support Contact Your VSC Representative



P.O. Box 19414, Lenexa, KS 66285-9414
 (913) 599-5939 FAX: (913) 599-5949
 Toll Free: 1-800-874-0631
 Email: vsc@vanbergcoatings.com
 Website: www.vanbergcoatings.com

GREAT CONTRACTOR OPPORTUNITY!